



June 12, 2018

**ADDENDUM No. 2**

**Request for Proposals CS-18-04  
REMOTE MONITORING SYSTEM FOR  
CANOE VALLEY RECREATION CENTRE AMMONIA PLANT**

*The addendum is being issued prior to the closing of the Request for Proposals (RFP) to provide further information, make changes to, or to clarify the Request For Proposal Documents and is to be read, interpreted and coordinated with all other parts of the RFP Documents. In the case of a conflict with the balance of the documents, this Addendum shall govern. **Proponents shall attach a signed copy of this addendum to their tender submission, failure to do so may result in a non-compliant proposal.** This addendum shall form part of the Contract Documents.*

1) Are the schematics available?

**Regional District's Response: Schematics are now available, please see the attached file.**

**Due to the age of the drawings, the Regional District advises that they may not accurately reflect the equipment installed in the ammonia plant. The Regional District and the author of the drawing do not and will not accept any responsibility for any costs incurred by any party who relies on the accuracy of the drawings.**

**Addendum No. 1 (June 8, 2018) item B. Mandatory Site Visit, will provide proponents the opportunity to verify details required to prepare their submission. The mandatory site visit will be held at the Canoe Valley Recreation Centre, 100 Elm Street, Valemount, BC at 10:00 a.m. on June 19, 2018.**

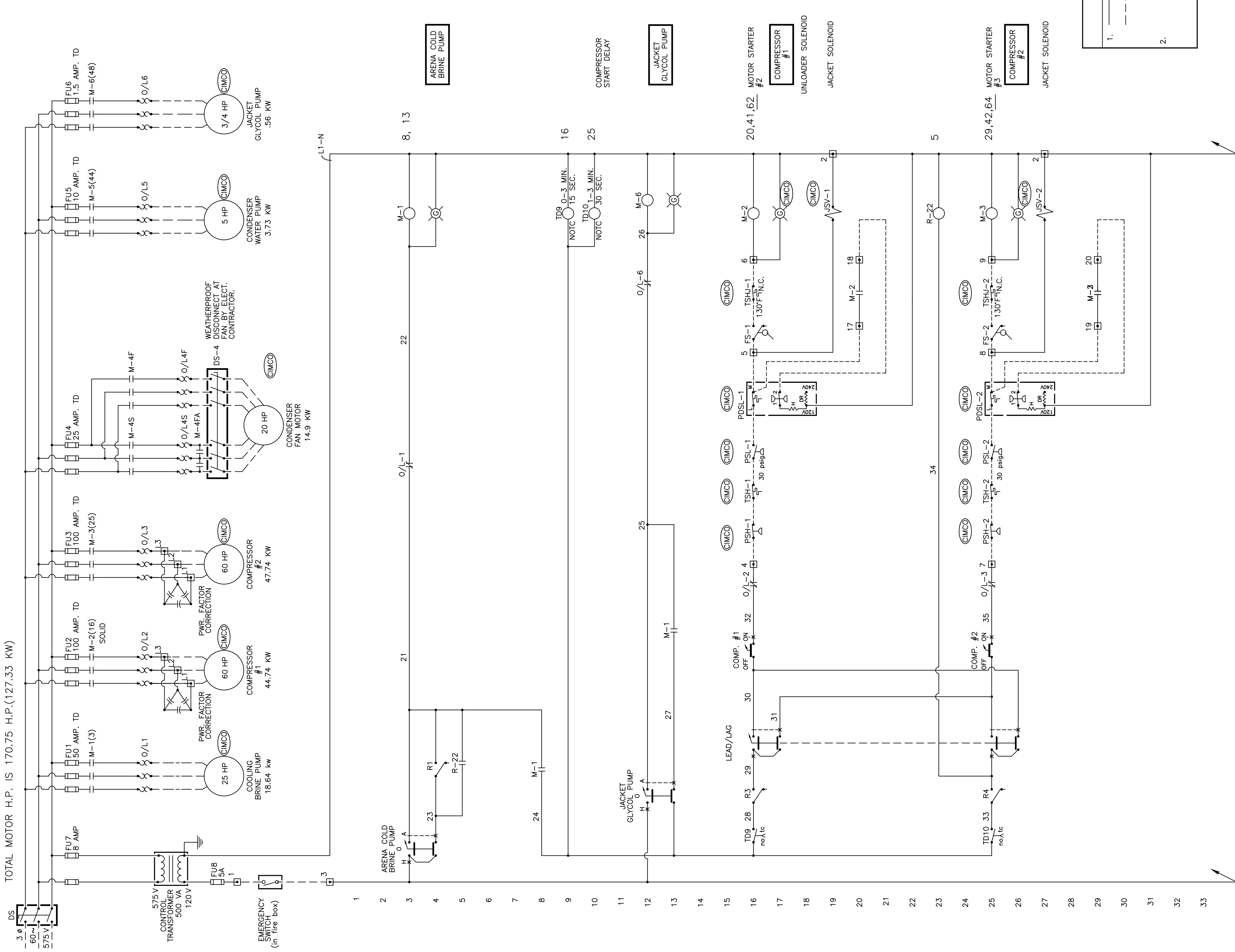
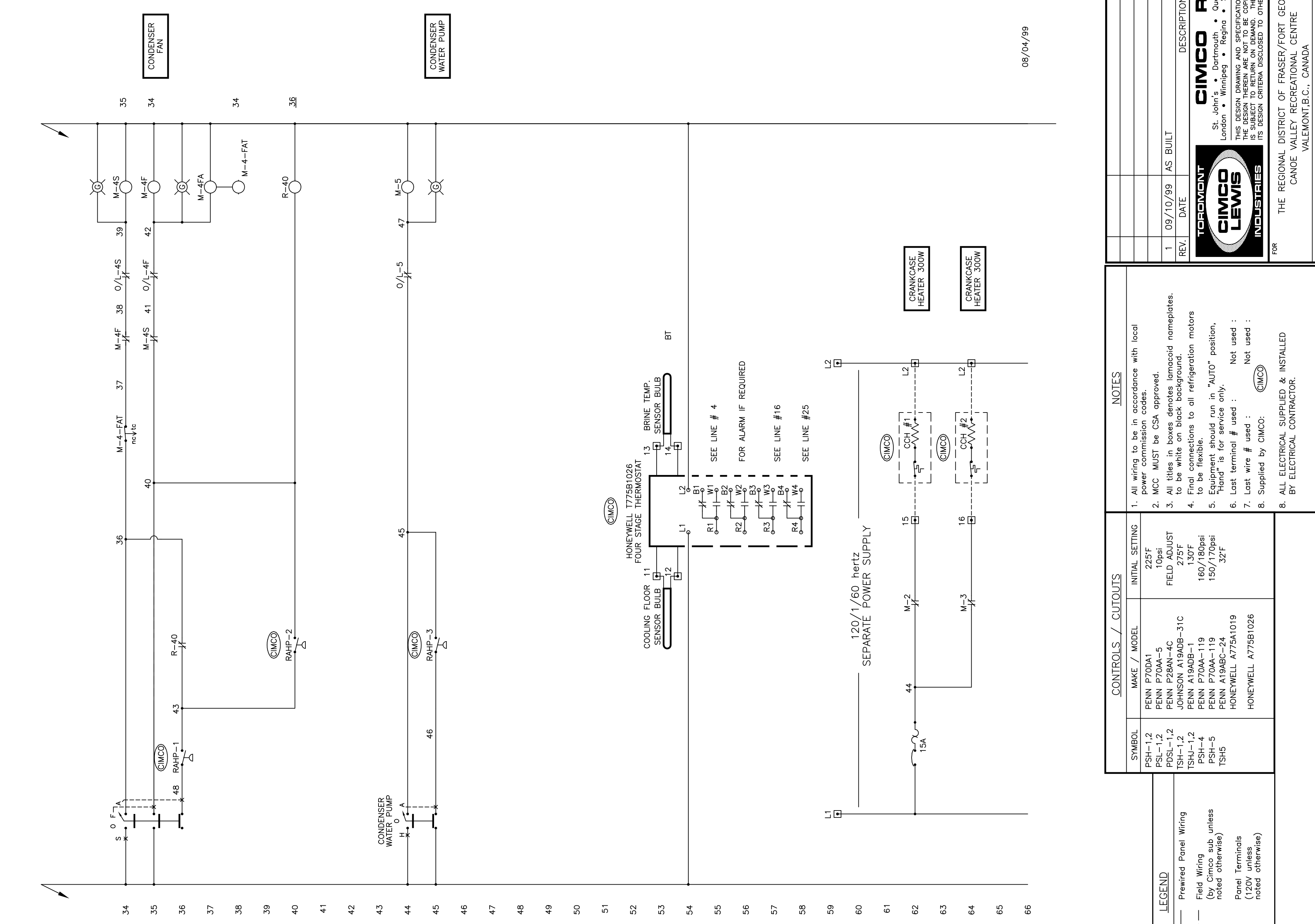
**Submissions from Proponents who do not attend the Mandatory Site Visit will be rejected.**

I/We hereby verify that we have considered this addendum in our proposal submission.

\_\_\_\_\_  
Proponent's Signature

\_\_\_\_\_  
Date

All inquiries relating to RFP CS-18-04 must be emailed to:  
Lyle Lewis, Project Manager  
Email: [llewis@rdffg.bc.ca](mailto:llewis@rdffg.bc.ca) with cc to [cpaton@rdffg.bc.ca](mailto:cpaton@rdffg.bc.ca)



REV	DATE	DESCRIPTION	BY	APP'D
1	09/10/99	AS BUILT	VB	

FOR THE REGIONAL DISTRICT OF FRASER/FORT GEORGE  
CANOE VALLEY RECREATION CENTRE  
VALEMONT, B.C., CANADA

THE REGIONAL DISTRICT OF FRASER/FORT GEORGE  
CANOE VALLEY RECREATION CENTRE  
VALEMONT, B.C., CANADA

AFRENA REFRIGERATION ELECTRICAL SCHEMATIC

SYMBOL	MAKE / MODEL	INITIAL SETTING
PSH-1,2	PENN P700A1	285°F
PSL-1,2	PENN P700A-5	1.5psi
PDS-1,2	PENN P280A-5	FIELD ADJUST
TSH-1,2	JOHNSON A190B-4C	275°F
TSHU-1,2	PENN A190B-1	130°F
PSH-4	PENN P700A-119	160/180psi
PSH-5	PENN P700A-119	150/170psi
TSH5	PENN A190B-24	150/170psi
	HONEYWELL A775A1019	
	HONEYWELL A775B1026	

SYMBOL	INITIAL SETTING
PSH-1,2	285°F
PSL-1,2	1.5psi
PDS-1,2	FIELD ADJUST
TSH-1,2	275°F
TSHU-1,2	130°F
PSH-4	160/180psi
PSH-5	150/170psi
TSH5	150/170psi

SYMBOL	INITIAL SETTING
PSH-1,2	285°F
PSL-1,2	1.5psi
PDS-1,2	FIELD ADJUST
TSH-1,2	275°F
TSHU-1,2	130°F
PSH-4	160/180psi
PSH-5	150/170psi
TSH5	150/170psi

SYMBOL	INITIAL SETTING
PSH-1,2	285°F
PSL-1,2	1.5psi
PDS-1,2	FIELD ADJUST
TSH-1,2	275°F
TSHU-1,2	130°F
PSH-4	160/180psi
PSH-5	150/170psi
TSH5	150/170psi

SYMBOL	INITIAL SETTING
PSH-1,2	285°F
PSL-1,2	1.5psi
PDS-1,2	FIELD ADJUST
TSH-1,2	275°F
TSHU-1,2	130°F
PSH-4	160/180psi
PSH-5	150/170psi
TSH5	150/170psi

SYMBOL	INITIAL SETTING
PSH-1,2	285°F
PSL-1,2	1.5psi
PDS-1,2	FIELD ADJUST
TSH-1,2	275°F
TSHU-1,2	130°F
PSH-4	160/180psi
PSH-5	150/170psi
TSH5	150/170psi

NOTES

- All wiring to be in accordance with local power commission codes.
- MCC MUST be CSA approved.
- All titles in boxes denotes tomocoid nameplates. To be white on black background.
- Final connections to all refrigeration motors to be flexible.
- Equipment should run in "AUTO" position. "Hand" is for service only.
- Last terminal # used : Not used ;
- Last wire # used : Not used ;
- Supplied by CIMCO.
- ALL ELECTRICAL SUPPLIED & INSTALLED BY ELECTRICAL CONTRACTOR.

LEGEND

- Prewired Panel Wiring
- Field Wiring (by Cimco sub unless noted otherwise)
- Panel Terminals (120V unless noted otherwise)

DATE: 08/04/99  
DWG. NO.: 9560E1  
REV. 1